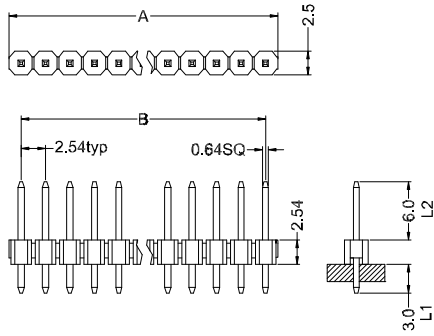
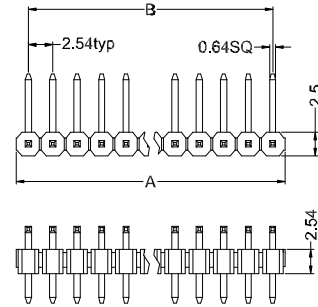


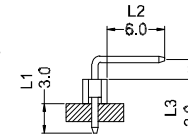
**Straight Type**



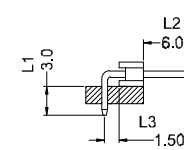
**Right Angle Type**



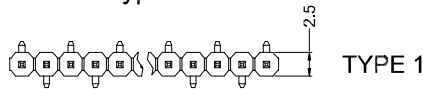
**R1 TYPE**



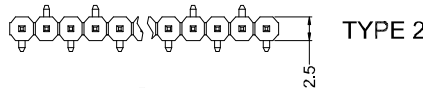
**R2 TYPE**



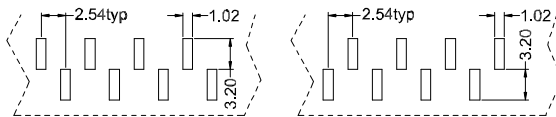
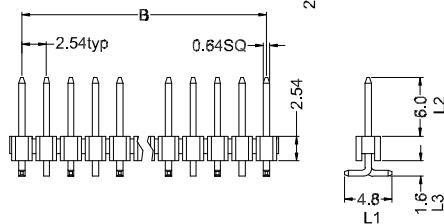
**Surface Mount Type**



TYPE 1

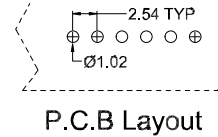


TYPE 2



TYPE 1

TYPE 2



P.C.B Layout

Position	1 Thru 40
Dimension	
A±0.20	2.54 X No.of Positions
B±0.15	2.54 X No.of Positions -2.54

**材质 Material:**

绝缘体 Insulator: Glass filled PBT UL94V-0 ,Black  
 接触件 Contacts: Brass  
 电镀层 Plating:Whole Gold plated over Nickel

**电气性能 Electrical Characteristics:**

接触电阻 Contact Resistance: 30mΩmax. at DC 100mA  
 绝缘电阻 Insulator Resistance: 1000MΩmin. at 500V DC  
 耐压 Withstanding Voltage: 1000V AC/rms 50Hz For 1 minute  
 工作电流 Current Rating: 2 AMP  
 使用温度范围 Operating Temperature: -55°C~+105°C

TITLE	PIN HEADER 2.54mm 2.54单排插针	GENERAL TOLERANCE	DRAWN BY	DATE	CHIZON CHIZON(CI XI) ELECTRONIC CO.,LTD. 啓宸(慈溪)电子有限公司
SERIES	QC501-1	x. : ±0.3 x.x: ±0.2 x.xx: ±0.1	CHECKED BY	DATE	
CUSTOMER P/N		ANGLE TOLERANCE	張國校	APPROVED BY	DRAWING NO.
UNITS	mm	x. : ±2° x.x: ±1° x.xx: ±0.5°	PROJECTION	DATE	SHEET
SCALE	1:1				1 OF 1
DESCRIPTION	CHK				REV.
					AO